

Livestock Project Information Page

4-H Livestock Projects



4-H Livestock Projects!

Texas is unmatched in youth livestock project ownership and participation. Students engaging in this project gain invaluable life skills such as work ethic, responsibility and accountability. Supporters of these exceptional youth invest nearly \$100 million annually in the futures of these young agriculturalists. What can become lost in a barn full of livestock, exhibitors, trophies, banners, buckles, premiums and scholarships, is that the barn is actually a classroom. The County Extension Agents and Agricultural Science Teachers leading youth through this experience are professional educators affiliated with a public or private school. The exhibitors qualify for excused absences as an extracurricular activity. Livestock show barns are the classrooms for livestock exhibitors. Because the barn is a classroom, the livestock community must take notice that we are constantly projecting an image to the public regarding the value of our classroom. We must proclaim the values we stand for and also condemn certain behaviors that are

unwelcome and unhelpful in preserving the sanctity of our unique classroom settings.

Livestock Project Information Sheet



Beef Cattle Show Animals **Steer Project**

[Beef Cattle Explore Project Book \(pdf\)](#)

[Managing Beef Cattle for Show\(pdf\)](#)

[Texas Show Steer Breed Classification\(pdf\)](#)

- Purchase steer in March or April
- Order validation tags in April
- Validate steers in June
- Have hooves trimmed throughout feeding period
- Treat for external parasites
- Steer must be dehorned
- Stock Show entry forms and fees for all stock shows are due in mid November
- Steer must be shorn to no more than ¼" on any location of the body except tail (exception of County, District and Fort Worth)
- Age for County and for other stock shows: 9 (or 8 & in the 3rd grade) – 18 years old



Let's Get Started With The Cattle Project

Main Resource for Beef Projects!!!

This Page contains videos for creating a successful Steer and Heifer Project Webinar Series. New Project Member should enroll and participate!!

Other Resources

- [Quiz Bowl Supplement](#)
- [Beef Explore Guide](#) – Great for new project members
- [Texas Youth Livestock](#)



Goat

[Sheep and Goat Explore Project Book](#) (pdf) Great resource for new project members.

4-H Meat Goat Guide(pdf)

- Purchase goats in July
- Order validation tags in August
- Validate goats in October

- Stock Show entry forms and fees for all stock shows are due in late October
- Meat goats must have milk teeth for some shows. Check rules for each show.
- Goats must be shorn slick (3/8")
- Horns must be tipped to show
- Age for County and for other stock shows: 9 (or 8 & in the 3rd grade) – 18 years old

Objectives
 Understand the goat industry, its products, and its importance to the economy.

Project Goals
 Understand the goat industry, its products, and its importance to the economy.

Health Care
 A successful health program should include vaccinations and treatments for various ailments and have individual disease and medicine records that are consistently maintained with veterinary professionals. Immunizations administered early when a goat is born are the best for its health.

Feeding
 Feeding, from growing animals, must ensure that goats get all the nutrients they need. Goat animals can be maintained on diets containing 12-15 percent protein. Water is the best for adequate energy for maximum utilization.

Goat Management
 Goats are hardy animals that can thrive in a variety of environments. They are easy to raise and can be a great addition to any farm or homestead.

What should you be looking for in your project?
 Skills, Knowledge, Leadership
 The more you know your project the more it becomes a reality.

Want to learn more?
<http://texas4-h.tamu.edu/projects/>

TYA
 Texas Youth Agriculture

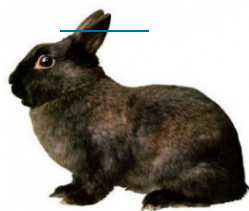
Goat Project
 Goats are hardy animals that can thrive in a variety of environments. They are easy to raise and can be a great addition to any farm or homestead.

Let's Get Started With The Goat Project

Main Resource for Goat Projects!!!

This Page contains videos for creating a successful Goat Project Webinar Series. New Project Member should enroll and participate!!

- [4-H Meat Goat Guide](#)
- <https://texas4-h.tamu.edu/projects/>



Rabbit

- [Main Resource for Rabbit Projects!!!](#)
- [Guidelines for Rabbit Showmanship](#)

- <https://texas4-h.tamu.edu/projects/rabbits/>
- [Rabbit Explore Guide](#)
- Age for County and for other stock shows: 9 (or 8 & in the 3rd grade) – 18 years old



Sheep

[Lamb Classification Guidelines \(2024\)](#)

[Sheep and Goat Explore Project Book \(pdf\)](#)

[4-H Show Lamb Guide\(pdf\)](#)

- Purchase lambs in early June
- Order validation tags in August
- Stock Show entry forms and fees for all stock shows are due in late October
- Need to consider age of lambs when purchasing for shows
- Must have milk teeth in place for show (they lose these around one year of age)
- Lambs must be shorn slick for show
- Age for County and for other stock shows: 9 (or 8 & in the 3rd grade) – 18 years old



Let's Get Started Sheep Project

Main Resource for Sheep Projects!!!

This Page contains videos for creating a successful Sheep Project Webinar Series. New Project Member should enroll and participate!!

- <https://texas4-h.tamu.edu/projects/sheep/>
- Market Lamb Classification Guidelines [Lamb Breed Classification Guidelines 2024](#)



Swine

[Swine Classification-updated summer of 2019](#)

NOTE: not all major shows have accepted these classifications. You will want to check the show Premium Books whenever they are released later in the fall to see if a show has adopted these guidelines.

Swine Project Guide(pdf)

Keeping Show Pigs Healthy (pdf)

- Order validation tags in September
- Purchase swine in October
- Validate swine in November
- Entry forms and fees for all stock shows are due in late October
- Age for County and for other stock shows: 9 (or 8 & in the 3rd grade) – 18 years old



TEXAS 4-H SWINE PROJECT
LET'S GET STARTED!

What should you consider with your project?
Space, Time, Money. The more you know about your project the easier it becomes to handle.

Project Length
Market Swine: Approximately 9 Months
Breeding Cobs: Approximately 1.5-2 Months

Swine
Swine project starts in late September. Project ends in late October. Project ends in late October. Project ends in late October.

Average Cost of Swine Project
Purchase Price: \$150.00
Feed Cost: \$100.00
Vet Cost: \$10.00
Total Cost: \$260.00

Feeding
Feed a grower/finisher pig 1.5% of its body weight daily. This should be followed by a finishing ration, with less protein, until the pig is sold. Maintain a pig on a diet of 1.5% body weight or more. Monitor the pig's health and feeding habits. Adjust feed amounts as needed.

Swine Project Checklist
Checklist: Feed, Water, Health, Housing, Genetics, Marketing, Record Keeping, Show Preparation, Show Day, Post-Show Care.

Swine
When you make the decision to start a swine project, you should consider the following: 1. Space: You need a place to keep your pig. 2. Time: You need to spend time with your pig. 3. Money: You need to spend money on your pig. 4. Health: You need to keep your pig healthy. 5. Genetics: You need to choose a good pig. 6. Marketing: You need to find a buyer for your pig. 7. Record Keeping: You need to keep records of your pig's health and performance. 8. Show Preparation: You need to prepare your pig for the show. 9. Show Day: You need to take your pig to the show. 10. Post-Show Care: You need to care for your pig after the show.

TYLA

Let's Get Started Swine

Main Resource for Swine Projects!!!

This Page contains videos for creating a successful Swine Project Webinar Series. New Project Member should enroll and participate!!



Poultry

Main Resource for Poultry Projects!!!

For more information regarding poultry care and management.

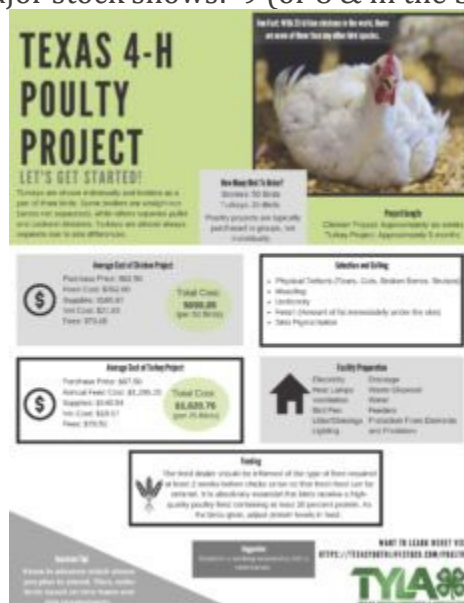
- [Poultry Breeds](#)
For information on all Poultry Breeds.
- [Should I take BROILERS as a 4H Project?](#)
Choosing to take a livestock project in 4-H should involve sound decision-making. This fact sheet provides basic information to help you make a good decision.
- [Should I take TURKEYS as a 4H Project?](#)
Choosing to take a livestock project in 4-H should involve sound decision-making. This fact sheet provides basic information to help you make a good decision.

[Poultry Q & A](#)

Turkey Project

[Producing Turkeys for Show \(pdf\)](#)

- Order poults in April from the Extension Office
- Pick up poults in October
- Entry forms and fees for all stock show are due in late October
- Age for major stock shows: 9 (or 8 & in the 3rd grade) – 18 years old



Let's Get Started Poultry Projects

Broilers [Getting Started with Show Broilers \(pdf\)](#)
[How to Produce Broilers and Roasters for Show \(pdf\)](#)

[Nutrition and Feeding of Show Poultry \(pdf\)](#)

- Order chicks in September from the Extension Office for major stock shows
- Order chicks in December from the Extension Office for County
- Pick up chicks in January for County Stock Show
- Pick up chicks in early January for San Antonio Stock Show
- Pick up chicks in late January for Houston and Austin Stock Shows
- Entry forms and fees for all stock shows are due in late October
- Weight requirements for County Show is 15 lbs. per pen
- Each exhibitor must order a minimum of 25 broilers
- Age for County and for other stock shows: 9 (or 8 & in the 3rd grade) – 18 years old

Dairy Cattle

- <https://texas4-h.tamu.edu/projects/dairy-cattle/>

Other Resources:

[*Welcome to Texas Youth Livestock & Agriculture*](#)

[Texas4-H Project Category](#)

Recycle your feed bags into something FUN!!! [Click to learn how!!](#)