

# Waller County AgriLife Extension Beef/Forage & Natural Resources Newsletter

## Local Programs

Private Pesticide  
Applicator Training  
April 29

Quarterly Beef and  
Forage Dinner,  
Summer Plant ID and  
IPM Management  
April 29

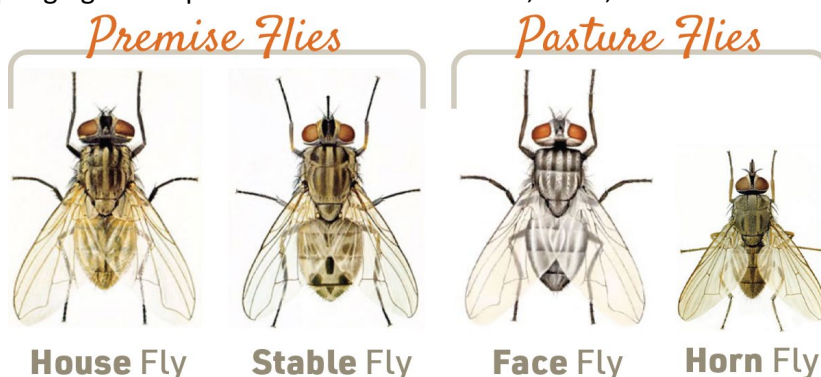
Harvest Today,  
Pantry Tomorrow  
and Don't Let the  
Bugs Win!  
May 2

O.D. Butler Forage  
Field Day  
May 15

Texas A&M Beef  
Cattle Short Course  
August 3-5

## Did you know you can ID different fly species on cattle by their behavior?

- Horn fly: Rest on the animal between blood feedings and feeds most often on the back, shoulders, and sides. Has piercing mouthparts. Estimated US producers lose over \$1 billion annually in lost production.
- Stable fly: Remains only on animals while feeding on blood and after feeding will fly to a shaded location to digest the meal. Feeds mainly on legs and has piercing mouthparts.
- House fly: Feeds on organic material such as manure but will also feed on available blood, sweat, tears and other bodily fluids. Has sponging mouthparts so it cannot pierce the skin. Can annoy cattle if in large enough numbers and transmits diseases.
- Face fly: Feed mainly around the eyes, muzzle, withers, neck, and brisket. Has sponging mouthparts used to feed on saliva, tears, and mucus.



	House Fly	Stable Fly	Face Fly	Horn Fly
Manure Breeders	✓ <small>(not fresh)</small>	✓	✓	✓
Compost Breeders	✓	✓		
Flying Strength	XX XX	XX XX	X XX	X

The four common flies of concern. Courtesy of <https://grow.ifa.coop/cattle/cattle-fly-control-methods-and-strategies>.

Roots to Results New Landowner Series was hosted by Warren Ranch and participants practiced body condition scoring of live cattle



South Central TX AG Conference was hosted by Vonderosa Farms and included a spray drone and pond management demonstration.



### **Private Pesticide Applicator Training**

This training is designed for private pesticide applicators in Texas that want to obtain a pesticide license. Training only on April 29, testing will not be offered during this training. [Click Here to Register](#) or call the extension office.

### **Quarterly Beef and Forage Dinner**

Dates and topics for 2026 Quarterly Beef and Forage Dinner: Jan. 28 Preparing Forages for the Growing Season, April 29 Summer Plant ID and IPM, July 22 External Cattle Parasites, and Oct. 28 Winter Feeding Strategies. The location will be the extension office. Dinner will be served at 6 and program will be from 6:00-7:30. Call the extension office to register.

### **Harvest Today, Pantry Tomorrow and Don't Let the Bugs Win**

Turn your fresh harvest into lasting goodness. Discover practical tips for canning, freezing, and storing so you can enjoy your garden all year long. Get the upper hand on garden pests and explore smart integrated pest management strategies. This free program is being sponsored by Waller County Master Gardeners and will take place at St. Bartholomew's Episcopal Church in Hempstead.

### **O.D. Butler Forage Field Day**

Field day will be at Thomas Ranch in Anderson, TX on May 15. If you have not visited the Thomas Ranch before I highly recommend attending. Topics will include live cattle demonstration focus on prevention of the new word screwworm, forage pest management, and drought insurance. 3 CEU will be offered. [Click Here to Register](#)

## **Management Tips**

- Our ponds have aquatic vegetation issues, especially algae. Treat ponds in late spring/early summer before weeds overrun the pond. You will save money and will prevent low oxygen levels.
- Open the understory of your forest. Herbaceous understory will benefit wildlife and improve the aesthetic appeal of your forest.
- You will not have successful pecan harvest without managing for pecan scab.
- Triclopyr may be the most important herbicide in Waller County. It can be applied individually to plants or on a large scale and controls woody vegetation. It is a great tool for managing unwanted woody vegetation especially for smaller landowners.
- Moles and gophers cause destructive tunneling activity. Learn how to recognize the difference between moles and gophers as that will dictate management control activities.

## Grassbur (field sandbur, sandbur, etc.)

Grassbur is a grass weed that is very troublesome in pastures and hay meadows throughout Texas. Most grassburs are easily recognized in the mature stage of growth when the “bur” seed heads become apparent. The bur itself is actually a “capsule” that usually contains from 1 to 3 seeds. We tend to think of the grassbur species as a warm season annual plant. However, many grassburs are classified as perennials because they can survive from one year to the next. The presence of grassburs can be an indication of a weak stand of forage. Grassburs are more tolerant of acidic, low fertility soils than many of our warm season forages. One of the best cultural control measures is to maintain a healthy stand of forage with proper management.

Identifying grassbur is key to chemical control. Unfortunately most can not identify a grassbur until it has produced the bur seed head. Dr. Scott Nolte, Associate Professor & Extension Weed Specialist, Texas A&M AgriLife Extension, has an excellent publication on grassbur identification. Click here for a copy of the publication: [Grassbur-Sandbur-Identification-and-Management](#)

### Select Herbicide Options:

Prowl H2O (pre-emergent; labeled for winter dormant bermudagrass only)

Rezilon (pre-emergent; labeled for bermudagrass and bahiagrass pastures and hay meadows)

Pastora (post-emergent for bermudagrass pastures, will destroy bahiagrass)



*Grassbur at the 2 to 3 leaf stage*

*Article Written By: Dr. Vanessa Corriher Olson, AgriLife Extension Forage Specialist*